

# AC 电机泵站

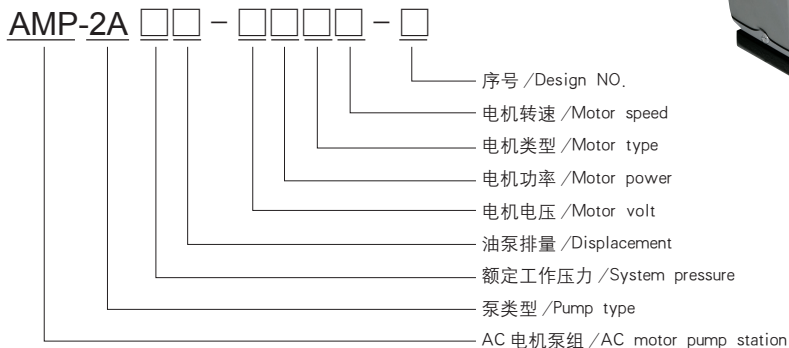
## AC MOTOR PUMP STATION

### 简介 General Description

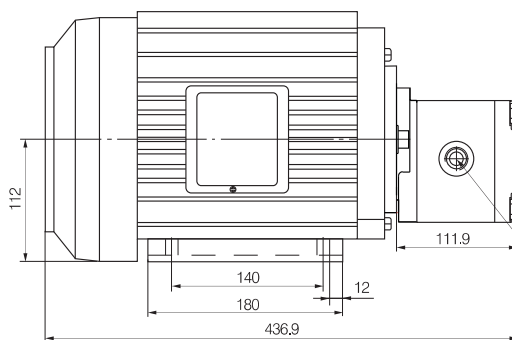
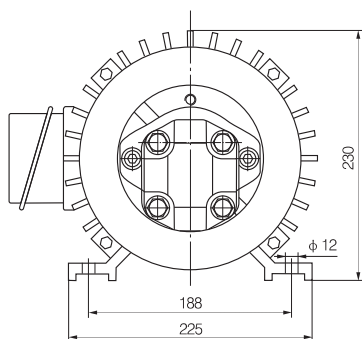
此液压泵站由CB2A 高压齿轮油泵与交流电机组成，性能稳定，是大型机械设备的理想动力源。

Equipped with a high pressure gear pump, a heavy duty AC motor this hydraulic pump station features stable performance, and can be widely used in large equipments.

### 型号说明 Ordering Code

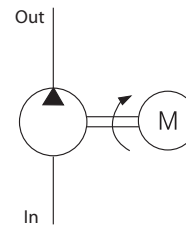


### 外形尺寸图 Outline Dimension



### 系统工作原理

#### Hydraulic Circuit Diagram



Inlet  
根据排量不同，油口尺寸见P19  
Port size see page 19 for different displacement

### 型号规格说明 Model Specifications

Model 型号	Motor Volt 电机电压	Motor power 电机功率	Displacement 油泵排量	System pressure 额定工作压力	Rated Speed 名义转速
AMP-2AE4-4GNB-B	380VAC	1.5KW	4mL/r	14MPa	1400rpm
AMP-2AF7-4JNB-B		3.7KW	7mL/r	20MPa	
AMP-2AD11-4INB-B		3KW	11mL/r	10MPa	
AMP-2AD14-4HNB-B		3KW	14mL/r	8MPa	
AMP-2AD15-4JNB-B		3.7KW	15mL/r	9MPa	

### 注意事项 Special Notes

1. 此动力单元不可连续运转 (1 分钟 ON, 9 分钟 OFF), 可重复工作。
2. 安装前必须保证油缸、油管、接头等液压元件清洁无任何杂质粘附。
3. 液压油粘度应为 15 ~ 68CST, 应清洁无杂质, 推荐使用 N46 号液压油。
4. 本电机泵站适用于卧式安装。

1. The power unit is of S3 duty, which can only be worked intermittently, i.e., 1minute on and 9 minutes off.
2. Clean all the hydraulic parts concerned before mounting the power unit.
3. Viscosity of the oil should be 15-68 cst, and the oil should be clean and free of impurities, N46 hydraulic oil is recommended.
4. The pump station should be mounted horizontally.