

DC 电机泵站 2

DC MOTOR PUMP GROUP 2



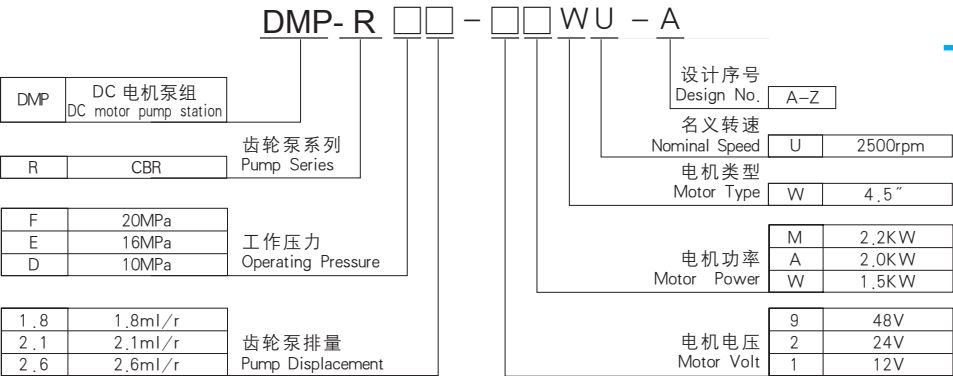
简介 General Description

此泵站由 CBR 系列齿轮泵与 4.5 英寸直流电机组成，泵里集成了溢流阀与单向阀。该产品作为液动力源广泛应用于移动设备液压系统。

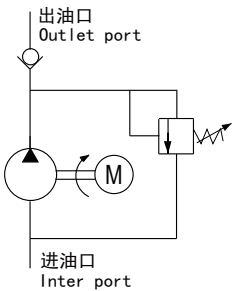
This motor pump consists of a 4.5"DC motor, a CBR gear pump with built-in relief valve and check valve. As a hydraulic power unit, it is widely used in hydraulic systems on mobile machines.



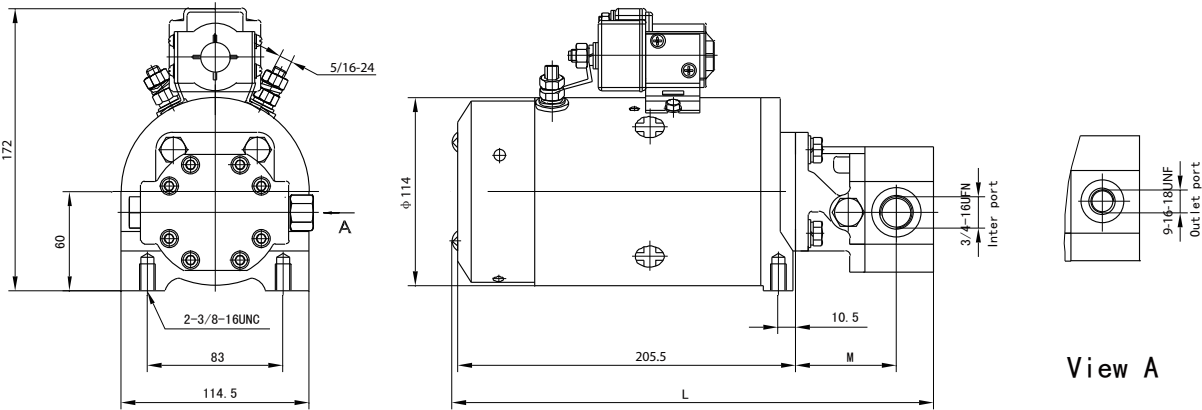
型号说明 Order Code



系统工作原理 Hydraulic Circuit Diagram



外形尺寸图 Outline Dimension



技术参数 Technial Date

| Model 型 号 | Motor Volt 电机电压 | Motor Power 电机功率 | Displacement 油泵排量 | Speed 转 速 | Operating pressure 工作压力 | 尺寸 Dimension(mm) | |
|------------------|--------------------|---------------------|----------------------|--------------|----------------------------|------------------|-------|
| | | | | | | M | L |
| DMP-RE1.8-1WWU-A | 12V | 1.5KW | 1.8mL/r | 2500rpm | 16MPa | 65.3 | 299.3 |
| DMP-RE2.1-2AWU-A | 24V | 2KW | 2.1mL/r | | | | 300.3 |
| DMP-RE2.1-2MWU-A | | 2.2KW | 2.6mL/r | | 10MPa | 71.8 | 301.8 |
| DMP-RD2.6-2MWU-A | | | 2.1mL/r | | 16MPa | 65.3 | 300.3 |
| DMP-RE2.1-9MWU-A | 48v | | | | | | |

注意事项 Special Notes

1. 此动力单元不可连续运转（1 分钟 ON，9 分钟 OFF），可重复工作。

2. 按装前必须保证油缸、油管、接头等液压元件清洁无任何杂质粘附。

3. 液压油粘度应为 15 ~ 68 CST，应清洁无杂质，推荐使用 N46 号液压油。

4. 本电机泵站适用于卧式安装。

5. 溢流阀预设压力通常比工作压力高约 25 %。
- 1.The power unit is of S3 duty, which can only work intermittently and repeatedly,ie., 1minute on and 9 minutes off.

2.Clean all the hydraulic parts concerned before mounting the power unit.

3.Viscosity of the oil should be 15~68 cst,and the oil should be clean and free of impurities,N46 hydraulic oil is recommended .

4.The pump station should be mounted horizontally.

5.The relief valve pressure is preset about 25% higher than the operating pressure.