

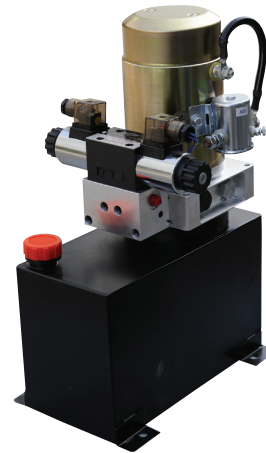
双作用动力单元 2

DOUBLE ACTING POWER UNITS 2

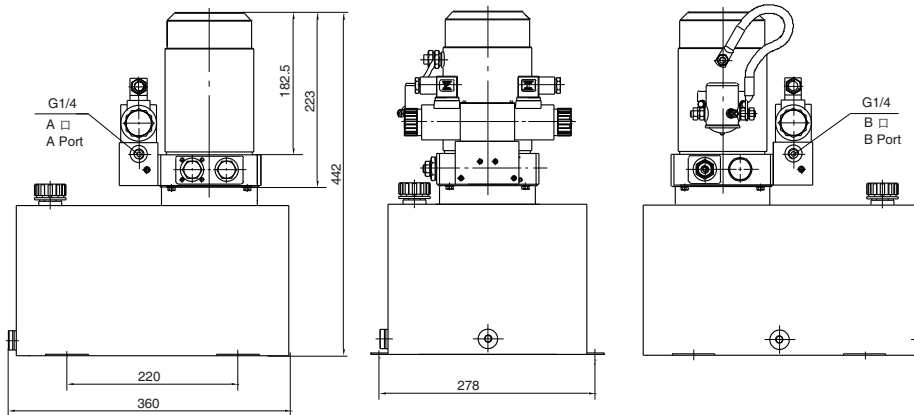
简介 General Description

此动力单元由高压齿轮泵、直流电机、多用集成块、各式液压阀、油箱等零部件有机结合为一体，是基本的中位卸荷、动力上升、动力下降油路，适合于对一组双作用缸的驱动和控制。

Consisting of high pressure gear pump, DC motor, multi-functional manifold, valves and reservoir, this power unit features a basic neutral open, power up power down function, which is used to the drive and control a group of double acting cylinders.

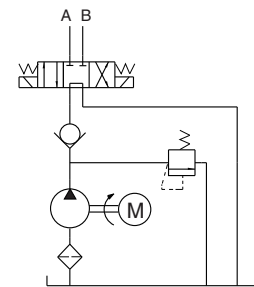


外形尺寸图 Outline Dimension



系统工作原理

Hydraulic Circuit Diagram



型号规格说明 Model Specifications

Model 型号	Motor Volt 电机电压	Motor power 电机功率	Rated Speed 名义转速	Displacement 油泵排量	System pressure 溢流阀压力	Tank Capacity 油箱容量
YBZ5-F1.2A1W4/WUAAN1	12VDC	1.5KW	2500rpm	1.2mL/r	20MPa	3.5L
YBZ5-F1.6B1W4/WUAAN1				1.6mL/r		5L
YBZ5-F2.7B2A4/WUDBN1	24VDC	2KW		2.7mL/r		6L
YBZ5-F2.5F2A4/WUDBN1				2.5mL/r		14L

说明：如需不同流量的泵、压力、电机功率等系统参数，请查看液动力单元型号说明。

Remark: Please go to page 38 or consult our sales engineer for the different pump displacement, motor power or tank capacity.

注意事项 Special Notes

1. 此动力单元为S3工作制，不可连续运转，30秒开、270秒停。
2. 按装前必须保证油缸、油管、接头等液压元件清洁无任何杂质粘附。
3. 液压油粘度应为15~68CST，应清洁无杂质，推荐使用N46号液压油。
4. 系统使用第一个100小时后，应更换液压油，以后每3000小时更换一次液压油。
5. 本液动力单元适用于立式安装。

1. The duty of this power unit is S3, i.e., 30 seconds on and 270 seconds off.
2. Clean all the hydraulic parts concerned before mounting the power unit.
3. Viscosity of the hydraulic oil should be 15~68 cst, which should also be clean and free of impurities. N46 hydraulic oil is recommended.
4. Oil changing is required after the initial 100 operation hours, afterwards once every 3000 hours.
5. The power unit should be mounted horizontally.