

FM 齿轮分流器

FM ROTARY GEAR FLOW DIVIDERS

简介 General Description

FM 分流器能为车辆、农业、材料处理和设备制造行业提供稳定可靠的同步解决方案，作为一种马达它有如下功能：

- 并联油缸或液压马达的同步操作
- 在单泵供油的场合，可一定比例向多个油路分配流量
- 当压力需高于泵的工作压力时可以进一步提压力值

FM flow dividers provide efficient, reliable service for a wide variety of applications in agricultural, materials handling as well as in construction equipment, they have the following functions from a single pump source:

- synchronized operation of multiple cylinders or hydraulic motors.
- proportional division of pump output among several circuits.
- intensified pressure when pressure higher than pump capacity is needed.

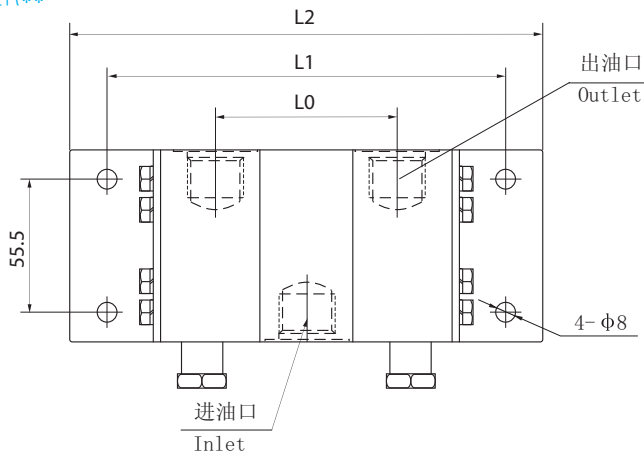


型谱 Order Code

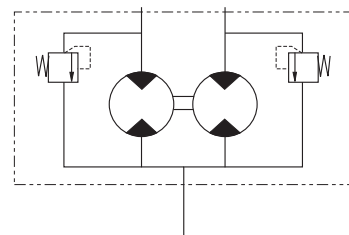
		FM		*	-	*	*	*	-	*	
A	铝 Aluminium	壳体材料 Housing Material									细节描述 Detailed description
C	铸铁 Cast Iron		油口形式 Ports Configurations	S	SAE 油口 SAE Ports						
2	2个 2 Section	分配室数目 Number Of Section	N	NPT 油口 NPT Ports							
4	4个 4 Section		G	管螺纹 (BSPP) BSPP Ports							
6	6个 6 Section		分配室排量 Displacement Of Each Section	0.061-0.5370 in ³ /r 0.061 to 0.5370 in ³ /r 1.0-8.8 cc/r 1.0 to 8.8 cc/r							
R	带溢流阀 With Relief Valve	溢流阀 Relief Valve									
N	不带溢流阀 Without Relief Valve										

外形尺寸图 Outline Dimension

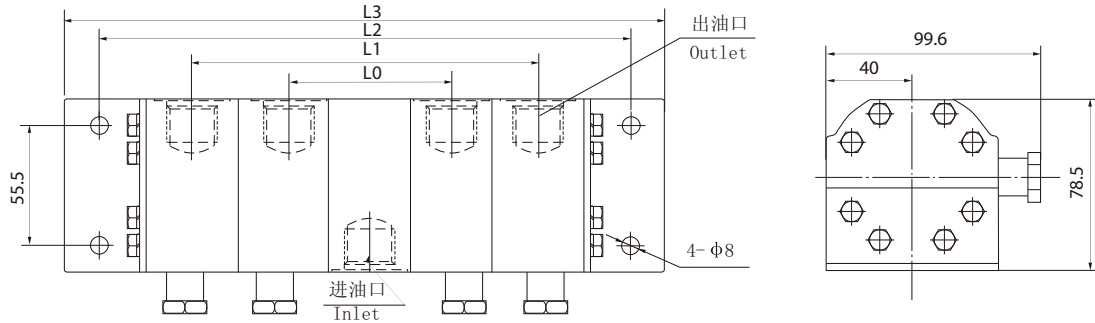
FM*-2R**



液压原理图
Hydraulic Schematic

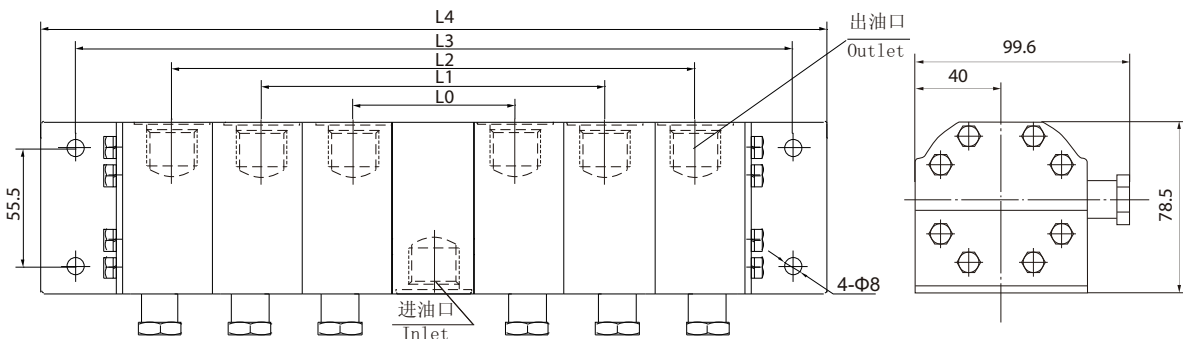


FM*-4R**



液压原理图
Hydraulic Schematic

FM*-6R**



液压原理图
Hydraulic Schematic

技术参数 Technical Data

Model 型号	Displacement 排量	Minimum inlet flow 最小进口流量 750rpm	Standard inlet flow 标准进口流量 1500rpm	Maximum inlet flow 最大进口流量 3000rpm	Maximum outlet pressure 出油口最大压力	Ports 油口		尺寸 Dimension(mm)				
	mL/r	L/M	L/M	L/M		进油口 Inlet	出油口 Outlet	L0	L1	L2	L3	L4
FM*-2*1.0**	1.15	1.73	3.46	6.92	25	3/4-16UN G1/2 NPT1/2	3/4-16UN G1/2 NPT1/2	72.5	151.4	183		
FM*-2*2.1**	2.17	3.26	6.51	13.02				72.5	151.4	183		
FM*-2*3**	3.18	4.77	9.54	19.08				76	158.4	190		
FM*-2*4.2**	4.34	6.51	13.02	26.04		7/8-14UN G5/8 NPT1/2	7/8-14UN G5/8 NPT1/2	76	166	198		
FM*-2*5**	4.89	7.34	14.67	29.34				79.8	170.2	201.8		
FM*-2*6.3**	6.37	9.56	19.11	38.22				90	180	212		
FM*-2*8.8**	8.82	13.23	26.46	52.92	107	197.4	229					
FM*-4*2.1**	2.17	6.51	13.02	26.04	21	3/4-16UN G1/2 NPT1/2	3/4-16UN G1/2 NPT1/2	72.5	159.5	238.8	270	
FM*-4*3**	3.18	9.54	19.08	38.16				76	170	252.4	284	
FM*-4*4.2**	4.34	13.02	26.04	52.08				76	178	268.4	300	
FM*-4*5**	4.89	14.67	29.34	58.68		7/8-14UN G5/8 NPT1/2	7/8-14UN G5/8 NPT1/2	79.8	185.6	276	307.6	
FM*-4*6.3**	6.37	19.11	38.22	76.44				90	206	296.4	328	
FM*-4*8.8**	8.82	26.46	52.92	105.84				107	240	330.4	362	
FM*-6*2.1**	2.17	9.78	19.53	39.06	16	7/8-14UN G5/8 NPT1/2	3/4-16UN G1/2 NPT1/2	72.5	159.9	247.3	326	358