

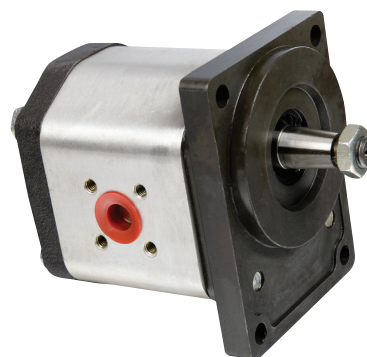
# GM2E 齿轮马达

## GM2E GEAR MOTORS

### 简介 General Description

GM2E 齿轮马达系高压齿轮马达，由一对高强度齿轮和泵体、前盖、后盖等主要部件组成，轴套可进行轴向压力补偿和径向压力平衡，大大提高了齿轮马达的性能指标。该马达噪音低、转矩大、体积小，广泛适用于汽车，拖拉机，工程机械及其他机械液压系统。

The GM2E gear Motor consists of a gear pair supported by two aluminum bearing blocks, a housing, front cover and rear cover. The axial clearance can be automatically compensated by the bearing blocks. The GM2E gear motor features low noise, big torque, and small dimension. It has been widely used in vehicles, tractors, construction machinery and other hydraulic system.



### 型谱 Order Code

**GM2E - F \* \* \* \***

20MPa	额定压力 Rated pressure				
4 ~ 19 mL/r	排量 Displacement				
C	泵体进 泵体出 Side in/side out	进 出口位置 Inlet/Outlet Position			

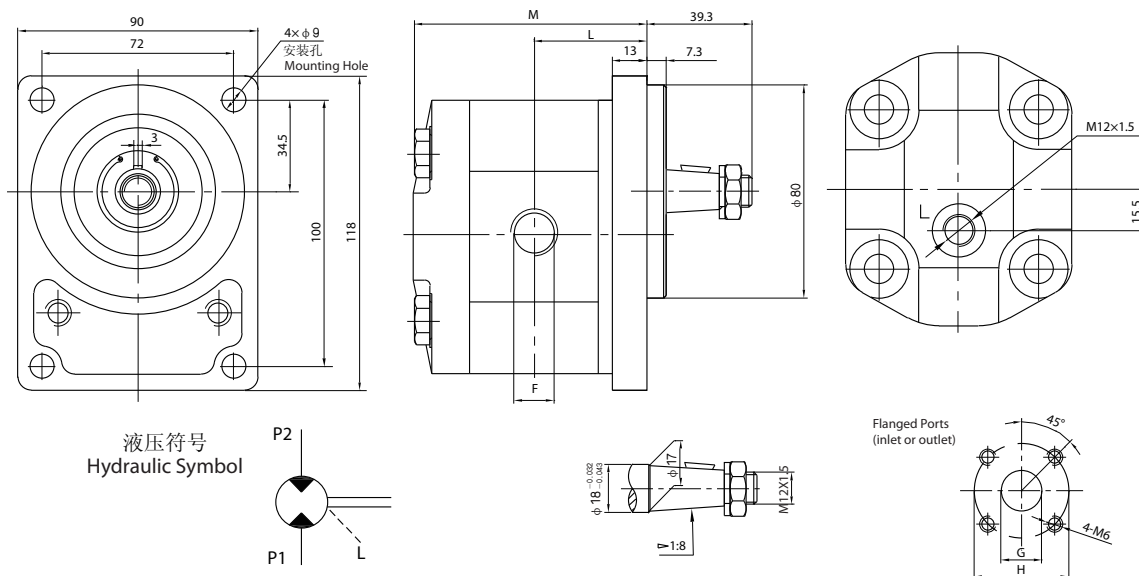
  

E	法兰油口 Flange Port
空白或 S Omit or S	SAE 油口 SAE O-ring boss
G	管螺纹 (BSPP) Gas Threaded Ports (BSPP)
B	公制螺纹 Metric Threaded Ports

油口形式 Port Configurations	
旋向 Direction	S 双向旋转 Bidirectional

### 外形尺寸图 Outline Dimension



### 技术参数 Technical Data

Model 型 号	Displacement 排量 mL/r(in <sup>3</sup> /r)	压力 pressure (MPa)			转速 Speed (RPM)		尺寸 Dimension				
		P1	P2	P3	额定 Rated	最高 Max	L(mm)	M(mm)	F	G	H
GM2E-F4 ***	4.47 (0.273)	18	20	22	2000	3000	40.4	84.1	SAE 口 7/8-14UN BSPP 口 G1/2" M27X2 公制口	φ 15	φ 35
GM2E-F6 ***	6.37 (0.389)						42.4	87.2			
GM2E-F11***	11.49 (0.701)						46.6	95.5			
GM2E-F14***	14.04 (0.857)						48.7	99.8			
GM2E-F17***	17.86 (1.090)						51.7	105.8			
GM2E-F19***	21.06 (1.177)						54	108.3			